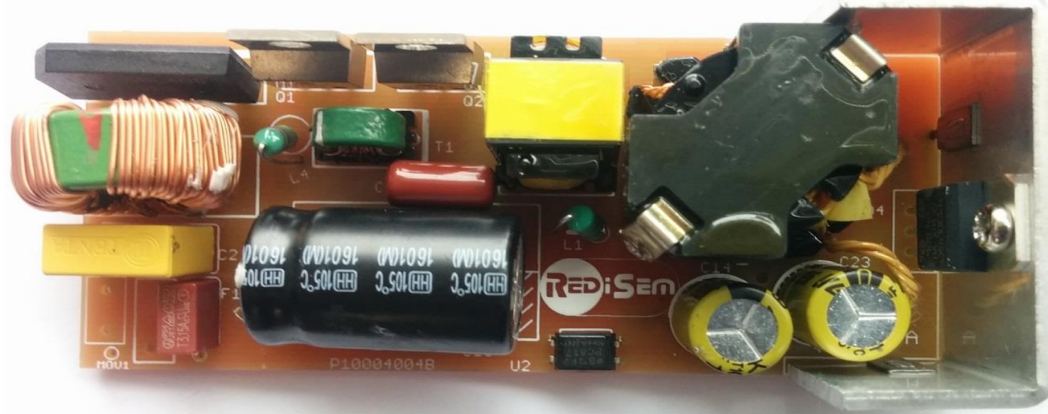




## 65W 15V 4.3A LL SMPS



<b>Input</b>	90-132VAC, 60Hz
<b>Output Power</b>	4.3A, 15V, 65W
<b>Output Ripple</b>	126mVp-p @ 120V full load
<b>Efficiency</b>	90.0% average @ 120V full load
<b>Standby power</b>	48mW
<b>Startup time</b>	320ms
<b>Protection</b>	Short circuit, Over current, Over voltage
<b>RediSem IC</b>	RED1501 SO8 LLC controller

Efficiency and regulation							
Vin	Fin	Load		Pin	Vout(pcb)	Vripple	Efficiency
90V	60Hz	100%	4.3	73.14W	14.98V	168mVpp	88.07%
90V	60Hz	75%	3.23	54.53W	14.98V	80mVpp	88.59%
90V	60Hz	50%	2.15	36.51W	14.98V	46mVpp	88.21%
90V	60Hz	25%	1.08	19.14W	14.98V	27mVpp	84.14%
90V	60Hz	10%	0.43	8W	14.98V	68mVpp	80.52%
Average							<b>87.25%</b>

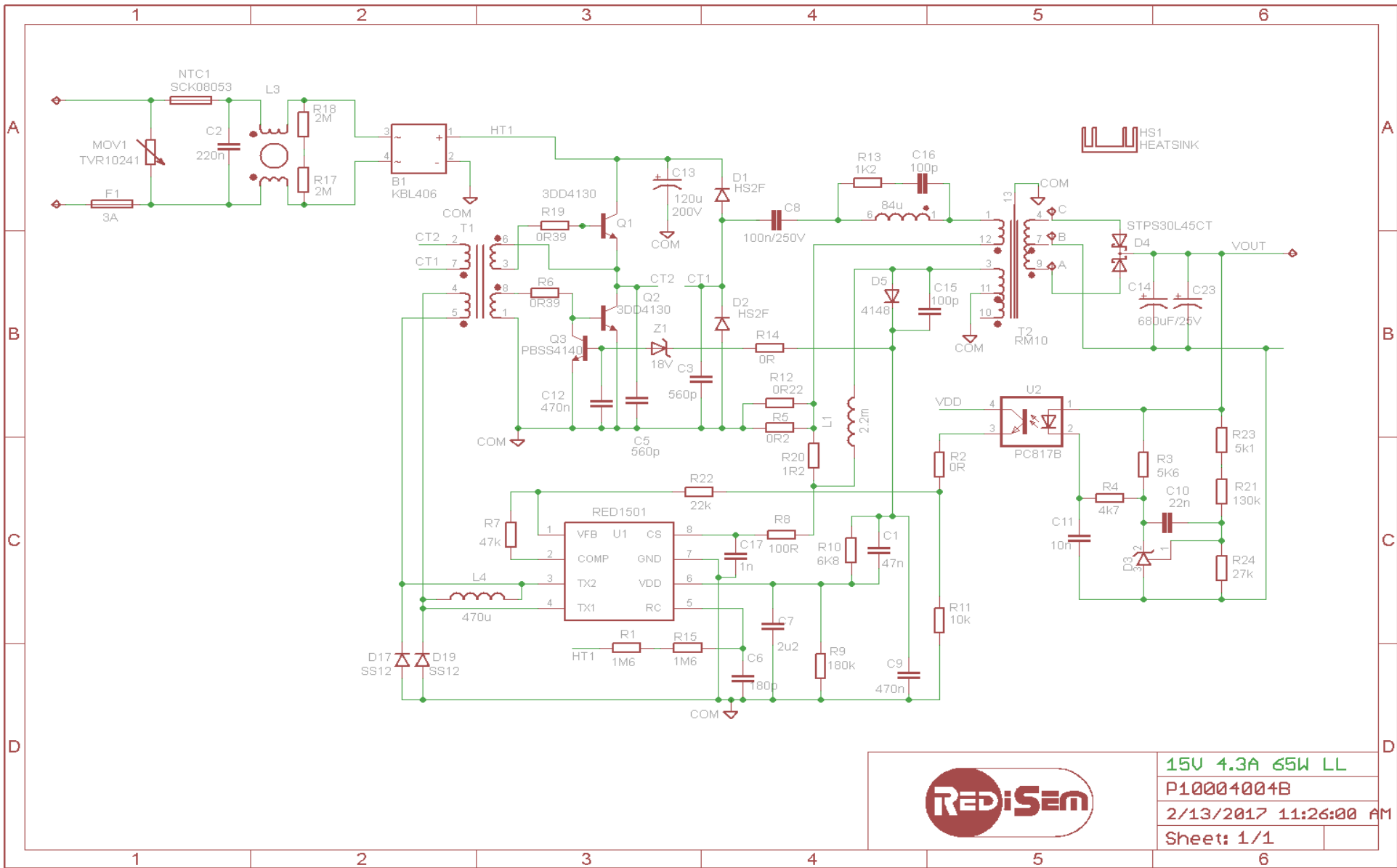
120V	60Hz	100%	4.3	71.11W	14.98V	126mVpp	90.58%
120V	60Hz	75%	3.23	53.4W	14.98V	106mVpp	90.47%
120V	60Hz	50%	2.15	35.72W	14.98V	102mVpp	90.17%
120V	60Hz	25%	1.08	18.13W	14.98V	84mVpp	88.82%
120V	60Hz	10%	0.43	7.42W	14.98V	109mVpp	86.81%
Average							<b>90.01%</b>

132V	60Hz	100%	4.3	71.18W	14.98V	83mVpp	90.49%
132V	60Hz	75%	3.23	53.41W	14.98V	87mVpp	90.45%
132V	60Hz	50%	2.15	35.66W	14.98V	87mVpp	90.32%
132V	60Hz	25%	1.08	17.7W	14.98V	55mVpp	90.98%
132V	60Hz	10%	0.43	7.13W	14.98V	84mVpp	90.34%
Average							<b>90.56%</b>

Light Loads						
Vin	Fin	Load	Pin	Vout	Vripple	Note
90V	60Hz	0.54A		14.98V	79mVpp	burst
120V	60Hz	0.528A		14.98V	95mVpp	burst
132V	60Hz	0.517A		14.98V	48mVpp	burst
120V	60Hz		46mW	14.98V		no load

Checks				
Vin	Fin	Load	OK?	Note

90V	60Hz	4.8A		Overload level
120V	60Hz	5.1A		Overload level
132V	60Hz	5.3A		Overload level
90V	60Hz	4.3A	500ms	Startup time
120V	60Hz	4.3A	320ms	Startup time
132V	60Hz		No	Startup Overshoot
120V	60Hz		No	Shutdown kickup
<90V	60Hz	4.3A	69Vac	Vout(max) brownout
120V	60Hz		19V	Feedback Fault Prot'n
120V	60Hz	4.3A	Yes	EMI pass margin



15V 4.3A 65W LL
P10004004B
2/13/2017 11:26:00 AM
Sheet: 1/1

